

C.A 6522 – C.A 6524 – C.A 6526 C.A 6532 – C.A 6534 – C.A 6536

Insulation and Continuity Testers



- Test voltage from 10 V to 1,000 V / 200 G Ω
- Manual, Lock, Timer and PI / DAR Ratios modes
- Visual Pass / Fail: red / green
- 200 mA / 20 mA continuity with active protection without fuses
- Measurement of V (TRMS & DC), F, Ω , k Ω , C and cable length
- Δ Rel mode & configurable alarms
- Storage of measurements in memory



CEI 61557

600 V CAT IV



Bluetooth DataView[®]

Measure up



Insulation and Continuity Testers

Ergonomics

Chauvin Arnoux's compact, lightweight testers are easy to learn how to use. All the information and measurement results are displayed on the backlit screen.

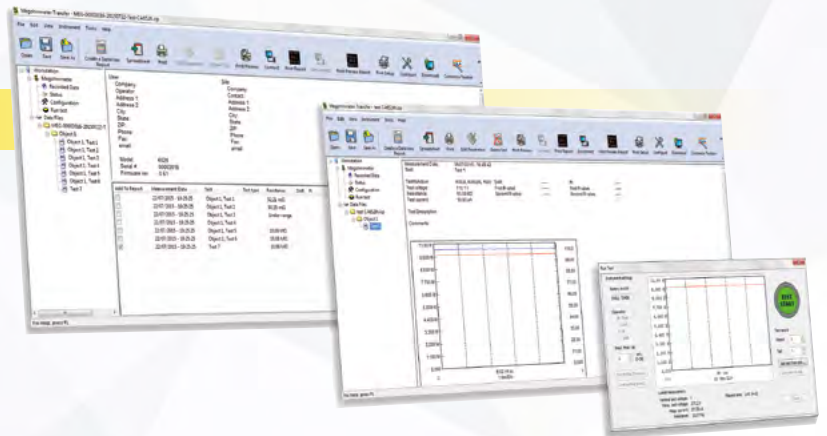


Accessories & Software

The **remote control probe** is an accessory specially developed to make your insulation tests in the field simpler and quicker.



- ➔ Insulation measurement can be triggered with a single press on the probe's yellow button.
- ➔ Equipped with a torch function, this probe effectively lights the point of measurement.
- ➔ Thanks to the tester's backlit screen, the measurement results are visible at all times, including in places with poor lighting.



The **DataView® software, with its Megohmmeter Transfer module**, automatically recognizes the instrument when it is connected to the PC and opens the corresponding menu. This tree-structure menu offers users direct access to the data recorded in the instrument and its configuration. The other functions available are:

- ➔ Activation of remote tests
- ➔ Real-time display
- ➔ DAR and PI references
- ➔ Graphical plot of the tests
- ➔ Generation of measurement reports



Applications

> INDUSTRIAL MAINTENANCE

C.A 6522, C.A 6524 and C.A 6526

Periodic insulation tests on installations and equipment help to prevent incidents by setting up preventive maintenance designed to detect ageing and premature deterioration of their insulation characteristics:

- Measurement of insulation over a programmed duration
- Alarms and Pass/Fail indicator light (C.A 6526)
- PI and DAR ratios to determine the quality of the insulation, with the advantage of not being significantly influenced by the temperature
- Storage in memory to compare the measurement histories

> SPECIAL C.A 6536

With a variable test voltage from 10 V to 100 V in 1 V increments, this model is intended for special applications in sectors such as avionics, space and defence, which often require a low test voltage and strict adherence to the programmed value.

> ELECTRONICS

C.A 6534

Thanks to its wide test-voltage range from 10 V to 500 V, this model covers the specific requirements of the electronics industries, for both low-current applications and power stages. Its measurement range is from 2 kΩ to 50 GΩ. With appropriate electrodes, the 10 V and 100 V test voltages can also be used for electrostatic discharge applications.

> TELECOMMUNICATIONS

C.A 6532

Ideal for measurements on telephone lines:

- Insulation tests at 50 V or 100 V
- Specific functions: measurement of resistance, capacitance, leakage current and AC voltage.
- Measurement of the difference in resistance between 2 wires in a pair by using the ΔREL function.
- Display of the length of the line being tested, thanks to programming of the linear capacitance in nF/km.



Function	C.A 6522	C.A 6524	C.A 6526	C.A 6532	C.A 6534	C.A 6536
Applications	Industrial maintenance			Telecom	Electronics / ESD	Special
Test voltage	250-500-1,000 V	50-100-250-500-1,000 V		50-100 V	10-25-100-250-500 V	10 to 100 V 1 V increments
Range	40 GΩ	200 GΩ	200 GΩ	20 GΩ	50 GΩ	20 GΩ
I leakage	–	●	●	●	●	●
Manual / Lock / Duration modes	●	●	●	●	●	●
PI / DAR ratios	–	●	●	●	–	–
Alarms	–	●	●	●	●	●
ΔREL	–	●	●	●	●	●
Continuity	●	●	●	●	●	●
Voltage	●	●	●	●	●	●
Frequency	–	●	●	●	–	–
R	–	●	●	●	●	●
Capacitance	–	–	●	●	–	–
Distance = f(C)	–	–	–	●	–	–
Magnetic mounting	–	●	●	●	●	●
Storage	–	●	●	●	●	–
Communication	–	–	●	●	●	–
Categories	CAT IV 600 V					
Display	Double + bargraph					

	C.A 6522	C.A 6524	C.A 6526	C.A 6532	C.A 6534	C.A 6536
Voltage						
Measurement range / Resolution	0.3 V - 399.9 V / 0.1 V; 400 V - 700 V / 1 V					
Accuracy / Input impedance	± (3 % + 2 cts) / 400 kΩ					
Operating frequency	DC; 15.3 - 800 Hz					
Frequency						
Measurement range / Resolution / Accuracy	15.3 Hz - 399.9 Hz / 0.1 Hz / ± (1 % + 2 cts); 400 - 800 Hz / 1 Hz / ± (1 % + 1 ct)					
Insulation						
Test voltage	250 - 500 - 1,000 V	50 - 100 - 250 - 500 - 1,000 V		50 - 100 V	10 - 25 - 100 - 250 - 500 V	10V to 100V in 1V steps
Range at maximum test voltage	40 GΩ	200 GΩ		20 GΩ	50 GΩ	20 GΩ
Compliance with IEC 61557-2 standard		2 GΩ			2 GΩ	2 GΩ
Measurement range: 10 V					2 kΩ - 1 GΩ	2 kΩ - 2 GΩ
25 V					5 kΩ - 2 GΩ	(U _N /5) kΩ - (U _N /5) GΩ
50 V		10 kΩ - 10 GΩ		10 kΩ - 10 GΩ		
100 V		20 kΩ - 20 GΩ		20 kΩ - 20 GΩ	20 kΩ - 10 GΩ	20 kΩ - 20 GΩ
250 V	50 kΩ - 10 GΩ	50 kΩ - 50 GΩ			50 kΩ - 25 GΩ	
500 V	100 kΩ - 20 GΩ	100 kΩ - 100 GΩ			100 kΩ - 50 GΩ	
1,000 V	200 kΩ - 40 GΩ	200 kΩ - 200 GΩ				
Variable test voltage						10V to 100V
Measurement range / Resolution	10 ⁽¹⁾ - 999 kΩ and 1,000 - 3,999 MΩ / 1 kΩ; 4.00 - 39.99 MΩ / 10 kΩ; 40.0 - 399.9 MΩ / 100 kΩ; 400 - 3,999 MΩ / 1 MΩ; 4.00 - 39.99 GΩ / 10 MΩ; 40.0 - 200 GΩ / 100 MΩ					
Accuracy	± (3 % + 2 cts) ⁽²⁾					
Test voltage (I < 1 mA)	- 0 % + 20 %					
Display of test voltage	± (3 % + 3 cts)					
Display of test current / resolution	0.01 μA - 39.99 μA / 10 nA; 40.0 - 399.9 μA / 100 nA; 0.400 - 2.000 mA / 1 μA					
Accuracy of test current	± (10 % + 3 cts)					
PI/DAR ratios	10 min / 1 min - 1 min / 30 s					
Timer (min:s)	0:00 - 39:59					
Discharge time (at 25V)	< 2 s/μF					
Alarms	2 fixed thresholds + 1 programmable threshold					
Continuity						
Range for continuity measurement	0.00 Ω - 10.00 Ω (200 mA)			0.00 Ω - 10.00 Ω (200 mA); 0.0 - 100.0 Ω (20 mA)		
Accuracy / Open-circuit voltage	± (2 % + 2 cts) / ≥ 6 V					
Measurement current	200 mA range: 200 mA (-0 mA + 20 mA); 20 mA range: 20 mA ± 5 mA					
Continuity thresholds (quick beep)	2 Ω fixed			2 Ω, 1 Ω, programmable threshold		
Compensation of cables	up to 9.99 Ω					
Resistance						
Measurement range / Resolution / Accuracy	0 - 3,999 Ω / 1 Ω; 4.00 kΩ - 39.99 kΩ / 10 Ω / ± (3 % + 2 cts) 40.0 kΩ - 399.9 kΩ / 100 Ω; 400 kΩ - 1,000 kΩ / 1 kΩ / ± (3 % + 2 cts)					
Capacitance						
Measurement range / Resolution				0.1 nF - 399.9 nF / 0.1 nF 400 nF - 3,999 nF / 1 nF 4.00 μF - 10.0 μF / 10 nF		
Accuracy	± (3 % + 2 cts)					
Line length	0 - 100 km					
General specifications						
Display	2 x 4,000 cts + logarithmic bargraph					
Storage	300 measurements			1,300 measurements		
Communication	Bluetooth® Class II					
Power supply / Automatic shutdown	6 x LR6(AA) batteries / 5 min, deactivatable					
Battery life	1,500/2,500/6,000 measurements ⁽⁴⁾ ; U _N x 1 kΩ @ U _N (5 s ON / 55 s OFF); 3,000 continuity measurements (5 s ON / 55 s OFF)					
Dimensions (h x w x d) / Weight / IP rating	211 x 108 x 60 mm / 850 g / IP 54 / IK 04					
EMC / Electrical safety	IEC 61326-1 / IEC 61010-1 and IEC 61010-2-030, 600 V CAT IV					
Compliance with standards	IEC 61557 parts 1, 2, 4 and 10					

(1): 2 kΩ for C.A 6532 - C.A 6534 - C.A 6536 - (2): to be added: 10 V: 1 % per 0.1 GΩ; 25 V: 0.4 % per 0.1 GΩ, 50 V: 2 % per GΩ, 100 V: 1 % per GΩ; 250 V: 0.4 % per GΩ; 500 V: 0.2 % per GΩ; 1,000 V: 0.1 % per GΩ
(3): 10 % / U_N is added per 100 MΩ - (4): depending on model.

States at delivery

C.A 6522 and C.A 6524 delivered with a carrying bag for hands-free use, 2 elbowed-straight safety leads (red and black) 1.50 m long, one red crocodile clip, one black test probe, 6 x LR6 or AA batteries, multilingual user's manual on CD, a quick start-up guide, multilingual safety datasheet.

C.A 6526, ditto + a CD containing the Megohmmeter Transfer software.

C.A 6532 and C.A 6534, same as C.A 6526 + 2 wire-grips (red and black).

C.A 6536, same as C.A 6524 + 2 wire-grips (red and black).



Example for C.A 6532

References

C.A 6522 megohmmeter	P01140822
C.A 6524 megohmmeter	P01140824
C.A 6526 megohmmeter	P01140826
C.A 6532 megohmmeter	P01140832
C.A 6534 megohmmeter	P01140834
C.A 6536 megohmmeter	P01140836

Accessories

Type-3 remote control probe	P01102092A
Continuity rod	P01102084A
Thermometer + K thermocouple, C.A 861	P01650101Z
C.A 846 thermo-hygrometer	P01156301Z
USB-Bluetooth adapter	P01102112
DataView® software	P01102095

Replacement parts

2 elbowed-straight safety leads (red and black) 1.50 m long	P01295453Z
2 crocodile clips (red and black)	P01295457Z
2 test probes (red and black)	P01295454Z
2 wire-grips (red and black)	P01102053Z
Carrying bag for hands-free use	P01298049